

performink CHICAGO (<http://perform.ink/>)

CHICAGO PREMIERE BY: TANYA BARFIELD

BRIGHT HALF LIFE

STARRING ELIZABETH LEDO & PATRESE D. MCCLAIN

★★★★ CHRIS JONES, CHICAGO TRIBUNE

CHICAGO READER RECOMMENDED

aft ABOUT FACE THEATRE

MUST CLOSE JULY 1ST

TICKETS AT THEATERWIT.ORG

(https://www.theaterwit.org/tickets/productions/box_office)

MAIN MENU ▾



Critics' Picks (<http://perform.ink/category/criticspicks/>) | Reviews (<http://perform.ink/category/review/>)

TUTA Boldly Brings Adam Rapp Play to Life in Chilling Production (<http://perform.ink/the-edge-of-our-bodies-review/>)

© March 21, 2016 (<http://perform.ink/2016/03/21/>) | 0 (<http://perform.ink/the-edge-of-our-bodies-review/#respond>)

Share

(Carolyn Molloy in TUTA's THE EDGE OF OUR BODIES – photo credit: Anthony LaPenna)

TUTA's production of Adam Rapp's THE EDGE OF OUR BODIES is immersive from the get-go. We enter through the garage of TUTA's new Ravenswood Manor space and end up in a small, intimate, almost makeshift theater, and immediately, our interest is piqued.

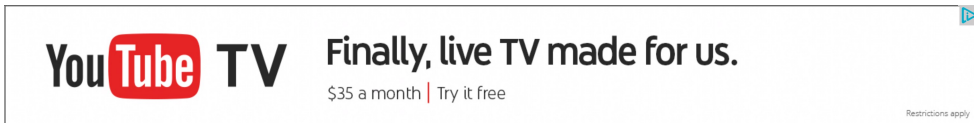


The first moments are wholly transporting, as we're drawn into the world of sixteen-year-old Bernadette (Carolyn Molloy). In a detailed account of her school-forbidden trip into New York City, Molloy captivates her audience as she brings Rapp's piercing imagery to life in what is, essentially, a 75-minute monologue. Together, her performance and his language create a disturbingly honest and delicate character in Bernadette, and the attention of the audience is palpable.

As auditions approach for Bernadette's school play, Rapp borrows from Jean Genet's *The Maids*, the haunting 1956 play loosely based on Christine and Lea Papin – two young maids who famously murdered their employer in France in 1933. In Genet's play, Solange and Claire engage in sadomasochistic, ritualistic fantasies of murder. Bernie's desire to play Claire colors her exploration of sexuality, adulthood, death and love as she acts out the story from her diary, embodying character after character with humor, honesty, and commitment.

Jacqueline Stone's thoughtful direction brings Bernie's diary to life with elegance and chaos. Rarely have I seen such a cohesive production. The design works to support Molloy's performance, offering her the freedom to play in the layers of this piece – the layers, perhaps, of Bernadette's psyche. Joe Court's sound design is particularly chilling. Martin Andrew's mesmerizing scenic design elevates the whole experience and will be hard to forget.

Though I'm still not sure I understood it all, I left the theater deeply affected. This is a brave production of a haunting play and is not to be missed.










18⁻²² **THE EDGE OF OUR BODIES**

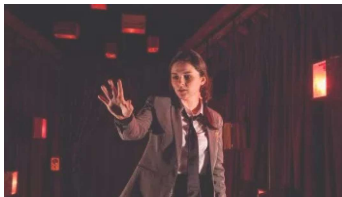
MAR TUTA THEATRE

Presented By: TUTA Theatre Event Type: Theater Neighborhood: Ravenswood Manor Tags Adam Rapp, Chicago Premiere, Pulitzer Prize, TUTA Theatre

Share this:

-  (<http://perform.ink/the-edge-of-our-bodies-review/?share=facebook&nb=1>) 208
-  (<http://perform.ink/the-edge-of-our-bodies-review/?share=twitter&nb=1>)
-  (<http://perform.ink/the-edge-of-our-bodies-review/?share=pinterest&nb=1>)
-  (<http://perform.ink/the-edge-of-our-bodies-review/?share=linkedin&nb=1>)
-  (<http://perform.ink/the-edge-of-our-bodies-review/?share=google-plus-1&nb=1>)
-  (<http://perform.ink/the-edge-of-our-bodies-review/?share=email&nb=1>)  More

Related



(<http://perform.ink/edge-bodies-extends/>)
 THE EDGE OF OUR BODIES Extends at TUTA (<http://perform.ink/edge-bodies-extends/>)
 April 15, 2016
 In "News"



(<http://perform.ink/line-announced-tutalab-2017/>)
 Line-Up Announced for TUTALab 2017 (<http://perform.ink/line-announced-tutalab-2017/>)
 May 11, 2017
 In "News"



(<http://perform.ink/jacqueline-stone-future-emerald-city-theatre/>)
 Jacqueline Stone and the Future of Emerald City Theatre (<http://perform.ink/jacqueline-stone-future-emerald-city-theatre/>)
 September 11, 2016
 In "Profiles"